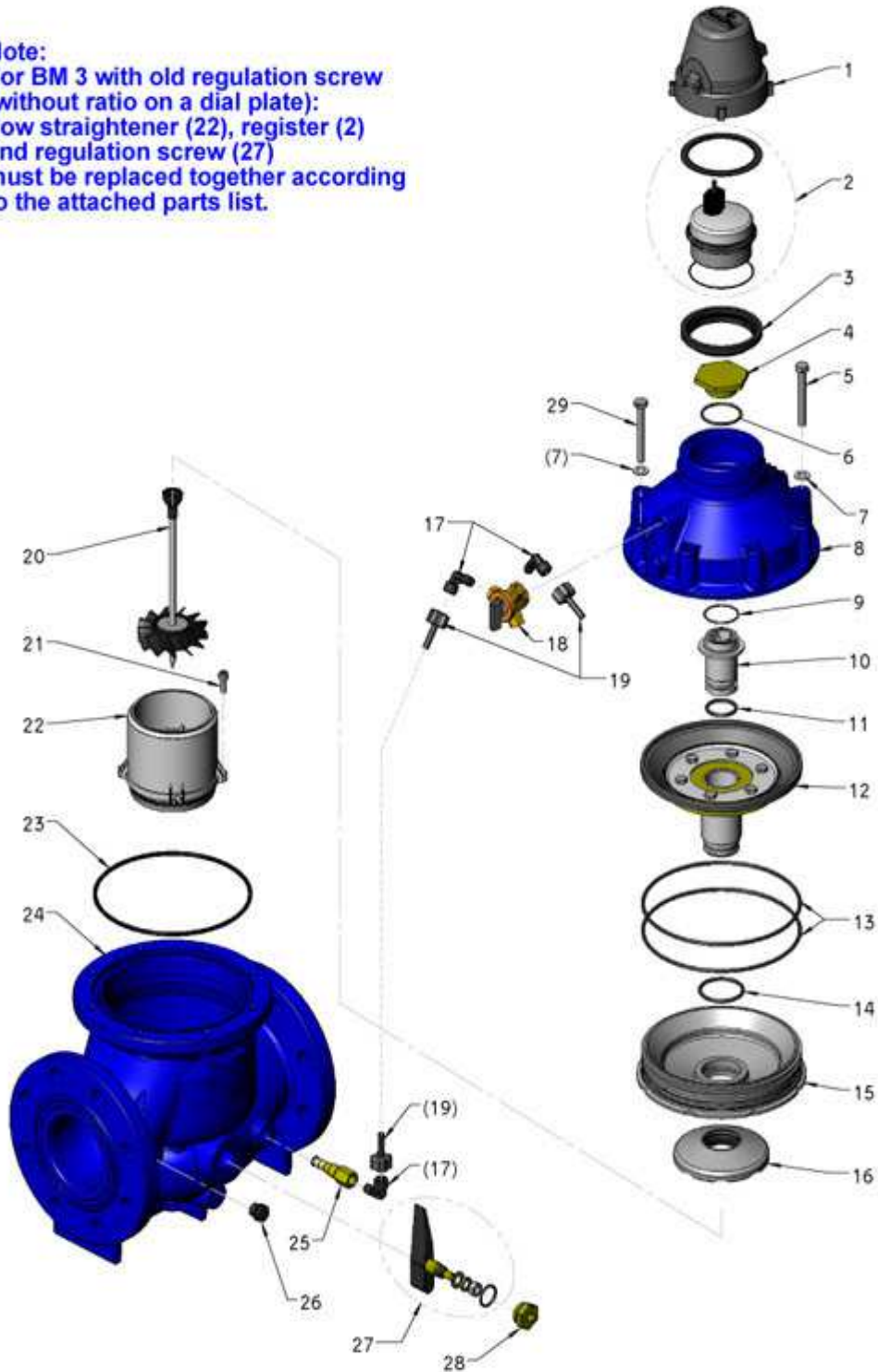


## BM 3" Calibrated 17831710

**Note:**  
For BM 3 with old regulation screw  
(without ratio on a dial plate):  
flow straightener (22), register (2)  
and regulation screw (27)  
must be replaced together according  
to the attached parts list.



No.	Cat. No.	Description	Quantity
1	25824629	Plastic cover EV lid	1
2	56837319	Register BM 3 EV 1m3 EEC 12.358	1
3	23123509	Adapter ring WM	1
4	21031619	Upper bearing screw BM 3-4 calib. assy	1
5	21040509	Hex.cap screw 5/16UNC x 2 1/2 A2	7
6	20612709	O-ring PARKER 2-128 ID-37.77 W-2.62	1
7	23022809	Flat washer M8 DIN 125A A2	8
8	25230959	Cover BM 3 4 blue	1
9	20600609	O-ring PARKER 2-027 ID-33.05 W-1.78	1
10	28520409	Central bushing BM 3-4	1
11	20614009	O-ring PARKER 2-215 ID-26.57 W-3.53	1
12	24602149	Stem BM 3 4 assy	1
13	20602209	O-ring PARKER 2-259 ID-158 W-3.53	2
14	20614109	O-ring PARKER 2-223 ID-40.87 W-3.53	1
15	24510409	Base BM 3 4	1
16	23020519	Stem gasket BM 3	1
17	25601709	Angle nipple B	3
18	24512609	3-way valve external thread R 1/8 & 3 internal G 1/8	1
19	26324119	Pilot tube assy	
20	23743299	Impeller BM 3 calibration assy	1
21	21480909	Socket head cap screw M6x16 DIN 912 A2	4
22	25043219	Flow Straightener BM 3 calibration assy	1
23	20612409	O-ring 156x4	1
24	32736259	Body BM 3 ISO calibration with central hole blue	1
25	25420519	Finger strainer 1/4x54 assy	1
26	21031009	Plug R 1/4	1
27	21381849	Regulator screw BM 3 vertical assy	1
28	21082009	Regulator cap device WT	1
29	21040510	Hex.cap screw 5/16UNC x 2 1/2 A2 drilled	1